

CTBHP Quarterly Data Reporting for the Child/Adolescent Quality, Access, & Policy Committee

2023

Daniel Langless, LMFT
Jackie Cook, LPC
Brian Ruedinger, PhD

May 17, 2023

Agenda

- 1 Youth Behavioral Health Emergency Department Utilization**

- 2 Youth Inpatient Psychiatric Utilization**

- 3 Youth HEDIS® Follow-Up After Hospitalization**

- 4 Youth Intermediate Level of Care: PMPM/Total Spend**

- 5 Youth Intermediate Level of Care Utilization**

Chapter

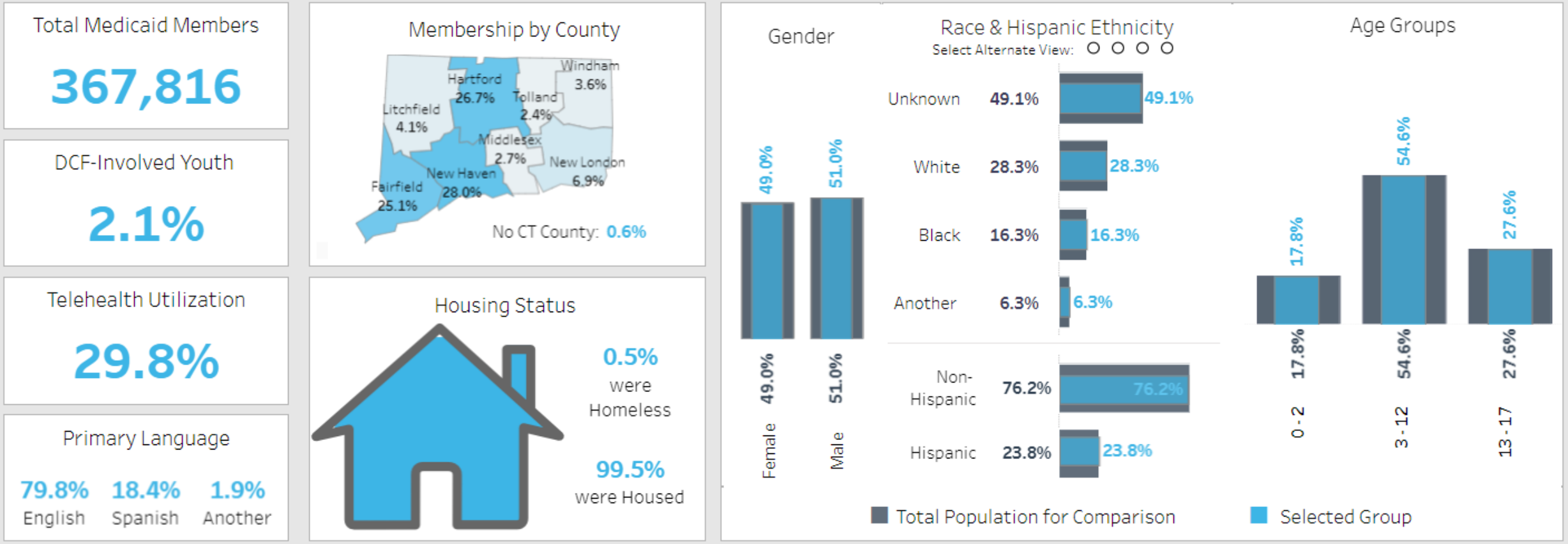
01

Youth BH ED Utilization

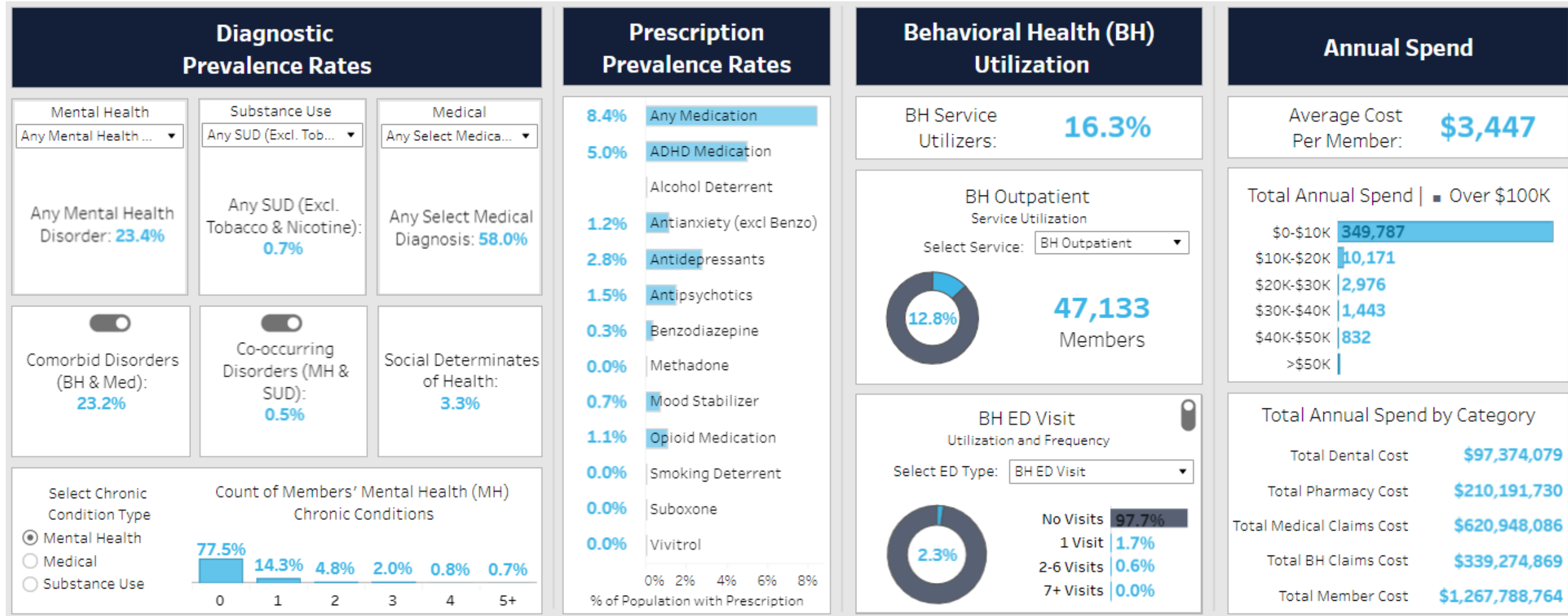
Including:

- **Demographics** (overall & ED utilizers)
- **Prevalence, Medication Rates, Service Utilization and Annual Spend** (overall & ED utilizers)

Demographics – Youth (0-17) Overall



Diagnostic Prevalence, Medication Rates, Service Utilization, & Annual Spend - Youth (0-17) Overall



Demographics – Youth (0-17) BH ED Utilizers

Total Medicaid Members

8,333

DCF-Involved Youth

9.1%

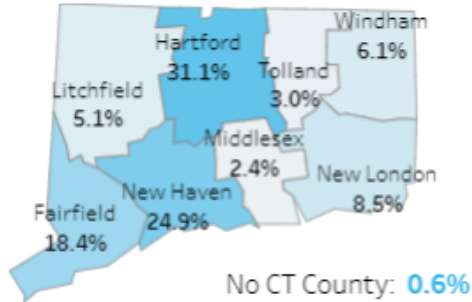
Telehealth Utilization

74.5%

Primary Language

85.3% English **13.8%** Spanish **0.9%** Another

Membership by County

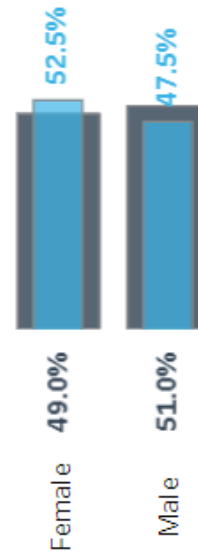


Housing Status



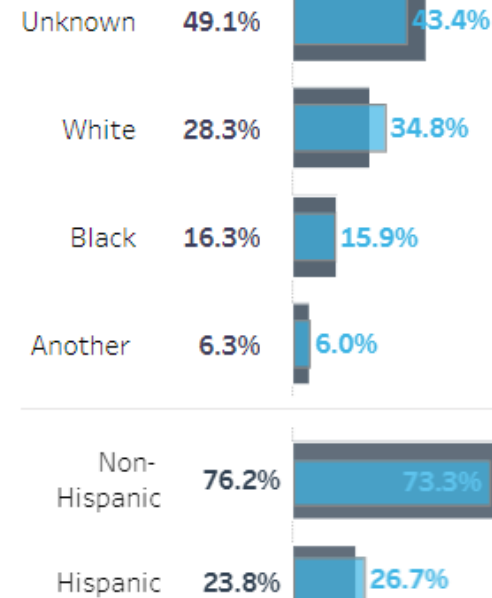
1.0% were Homeless
99.0% were Housed

Gender



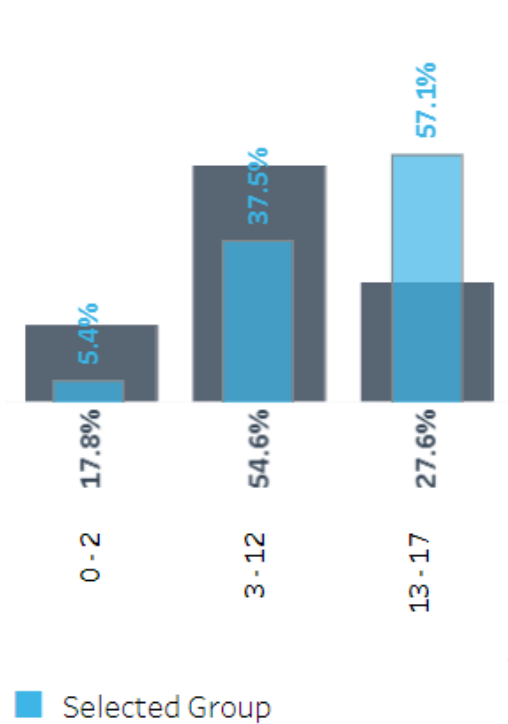
Race & Hispanic Ethnicity

Select Alternate View: ☐ ☐ ☐ ☐



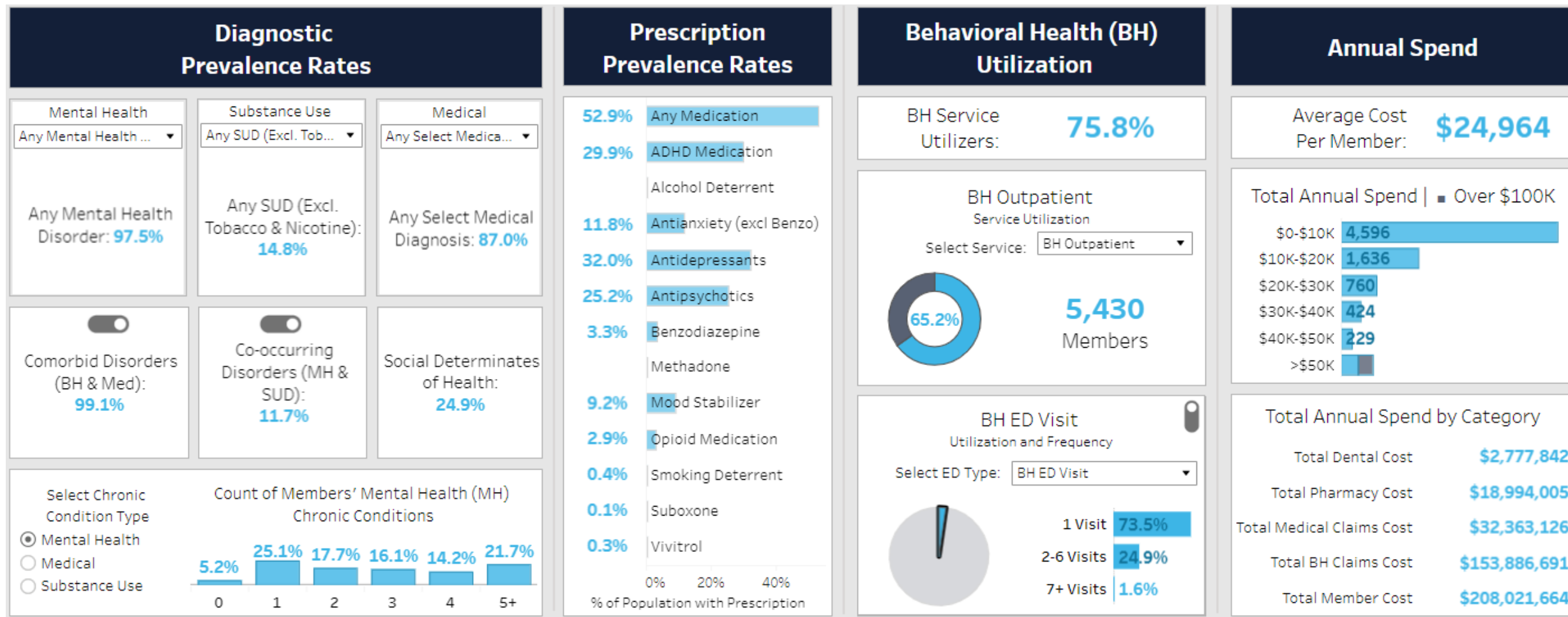
■ Total Population for Comparison

Age Groups



■ Selected Group

Diagnostic Prevalence, Medication Rates, Service Utilization, & Annual Spend - Youth (0-17) BH ED Utilizers



Chapter

02

Youth Inpatient Psychiatric Hospitalization Utilization

Including:

- Total Bed Capacity
- Demographics
- Diagnoses, Utilization, and Costs for Inpatient Utilizers

Inpatient Psychiatric Hospital Licensed Bed Capacity

317 total licensed beds

Hospital Name	Age Group	Number of Beds	Service Class
Hartford Hospital	Youth	32	Inpatient Psych
Natchaug Hospital	Youth	26	Inpatient Psych
Prospect Manchester Hospital	Youth	16	Inpatient Psych
Prospect Waterbury Hospital	Youth	0	Inpatient Psych
Trinity Health - St. Francis Hospital	Youth	18	Inpatient Psych
SVMC Holdings, Inc.	Youth	16	Inpatient Psych
Yale New Haven Hospital	Youth	39	Inpatient Psych
Four Winds Hospital	Youth	150	Inpatient Psych
Hospital for Special Care	Youth	20	Inpatient Psych
Total		317	

Demographics – Youth (0-17) IP Psych Utilizers

Total Medicaid Members

1,869

DCF-Involved Youth

14.9%

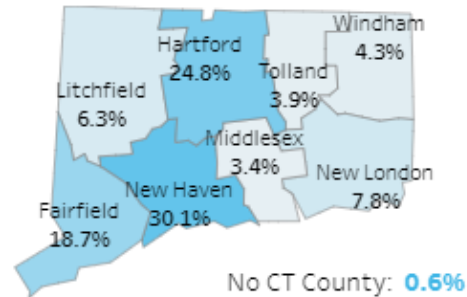
Telehealth Utilization

87.4%

Primary Language

90.0% English
9.3% Spanish
0.7% Another

Membership by County



Housing Status



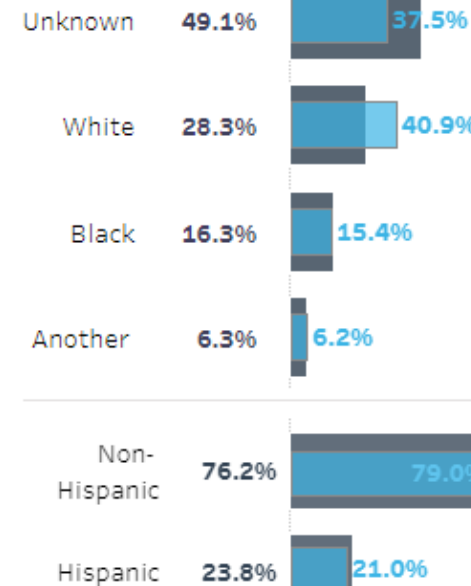
1.7% were Homeless
98.3% were Housed

Gender

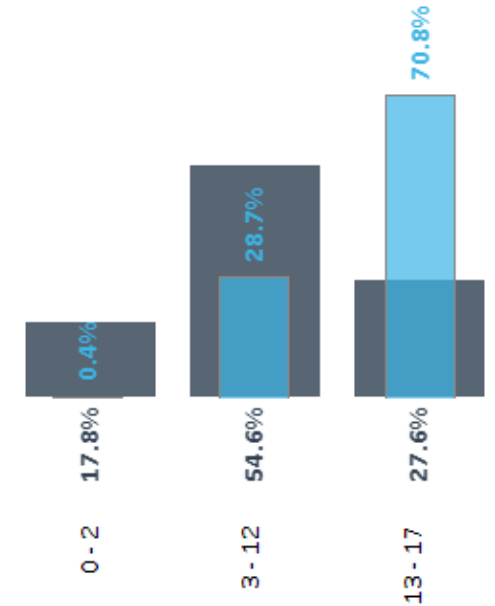


Race & Hispanic Ethnicity

Select Alternate View: ☐ ☐ ☐ ☐



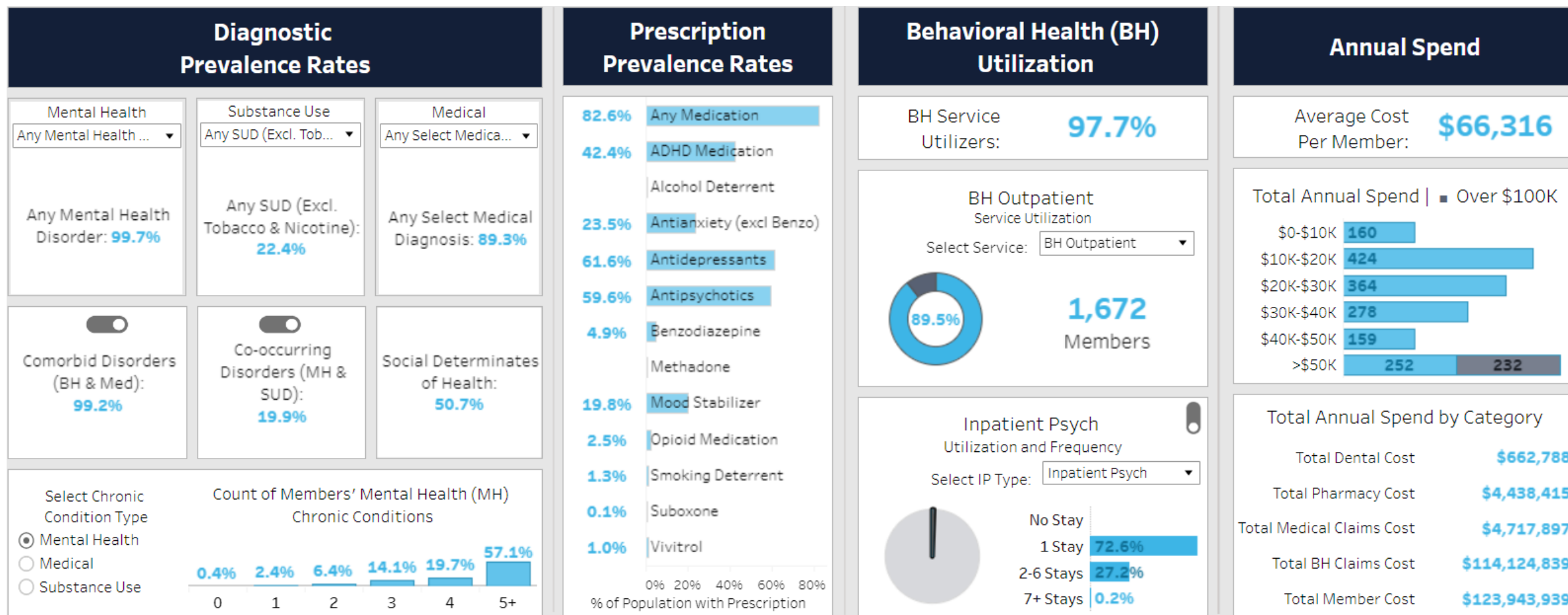
Age Groups



■ Total Population for Comparison

■ Selected Group

Diagnostic Prevalence, Medication Rates, Service Utilization, & Annual Spend - Youth (0-17) IP Psych Utilizers



Chapter

03

Youth HEDIS® Follow-Up After Hospitalization for Mental Illness

Including:

- Trend Analysis
- Annual FUH Rates by Race

2019 - 2021 – HEDIS® Follow-Up After Hospitalization

Annual Rates for All Ages

Carelon's HEDIS® dashboard does not break out demographics for the HEDIS® trend analysis. Such an analysis would require either a special ad hoc report or showing each year's report so the reader could compare rates over the years for the youth cohort. These are annual measures so there are no quarterly rates.

Measure Name	Measure Subset	Measure Age Group	2019	2020	2021	2019	2020	2021	2019	2020	2021
Follow-Up After Hospitalization for Mental Illness (FUH)	7-Day	Total (6+)	48.7%	47.6%	47.9%	↑	↓	◆	●	◐	◐
	30-Day	Total (6+)	69.3%	67.1%	67.9%	↑	↓	↑	●	◐	◐

Key for Connecticut Trend Comparisons

- ↑ Improved Rate from Previous Year*
- ↓ Declined Rate from Previous Year*
- ◆ No Change from Previous Year (less than 0.5% change)
- * Previous Year Not Available For Comparison

Key for National & New England Average Rate Comparisons

- CT was more favorable than (or equal to) both comparison rates
- ◐ CT was more favorable than (or equal to) only one of the comparison rates
- CT was less favorable than both comparison rates
- Benchmark rates unavailable

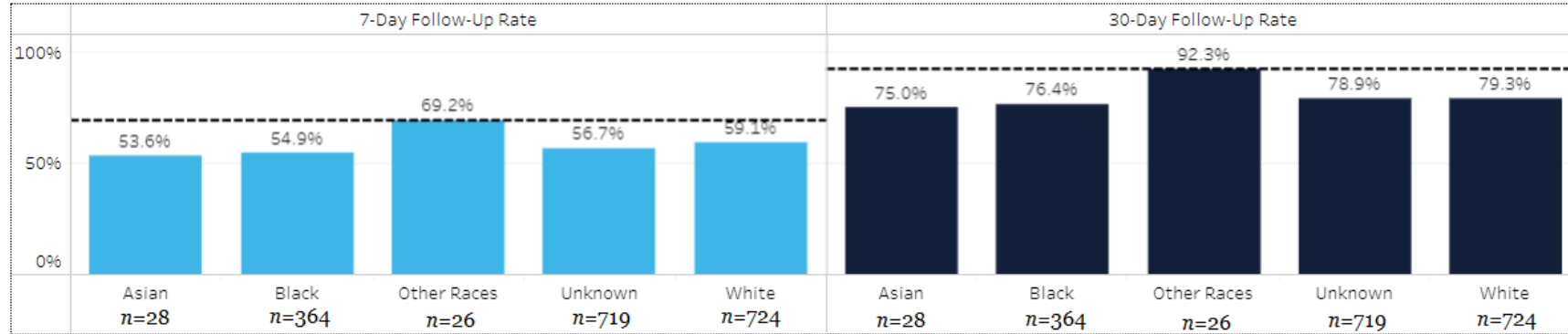
2021 – Follow-Up After Hospitalization rates for Youth (6-17) by Race

***Disclaimer:** Caution is advised when comparing rates as some groups have small n sizes. Hover over the rate to view the n size for the group.

Measurement Year: Age Group: Demographic View:

FUH Measurement Year 2021 Demographics

Compared to the Best Off Rate (dotted reference line)



Corresponding Follow-Up After Hospitalization for Mental Illness (FUH) Table

Use the below table to compare numerator & denominator % of total demographics rates with the % of total population rates.

2021 Medicaid (6+, excluding duals) population in blue below.

		7-Day Follow-Up Numerator	7-Day Numerator % of Total	30-Day Follow-Up Numerator	30-Day Numerator % of Total	Denominator	Denominator % of Total	2021 Medicaid (6+, excluding duals) Population	
2021	Asian	15	1.4%	21	1.4%	28	1.5%	Asian	3.4%
	Black	200	18.7%	278	19.0%	364	19.6%	Black	17.4%
	Other Races	18	1.7%	24	1.6%	26	1.4%	Other Races	0.8%
	Unknown	408	38.2%	567	38.7%	719	38.6%	Unknown	42.7%
	White	428	40.0%	574	39.2%	724	38.9%	White	35.8%

Note: The Age Group filter reflects the age stratification for this measure and allows for the subset of demographics by age. Caution is advised when viewing the Age demographic view, as these stratifications will not directly align.

Chapter

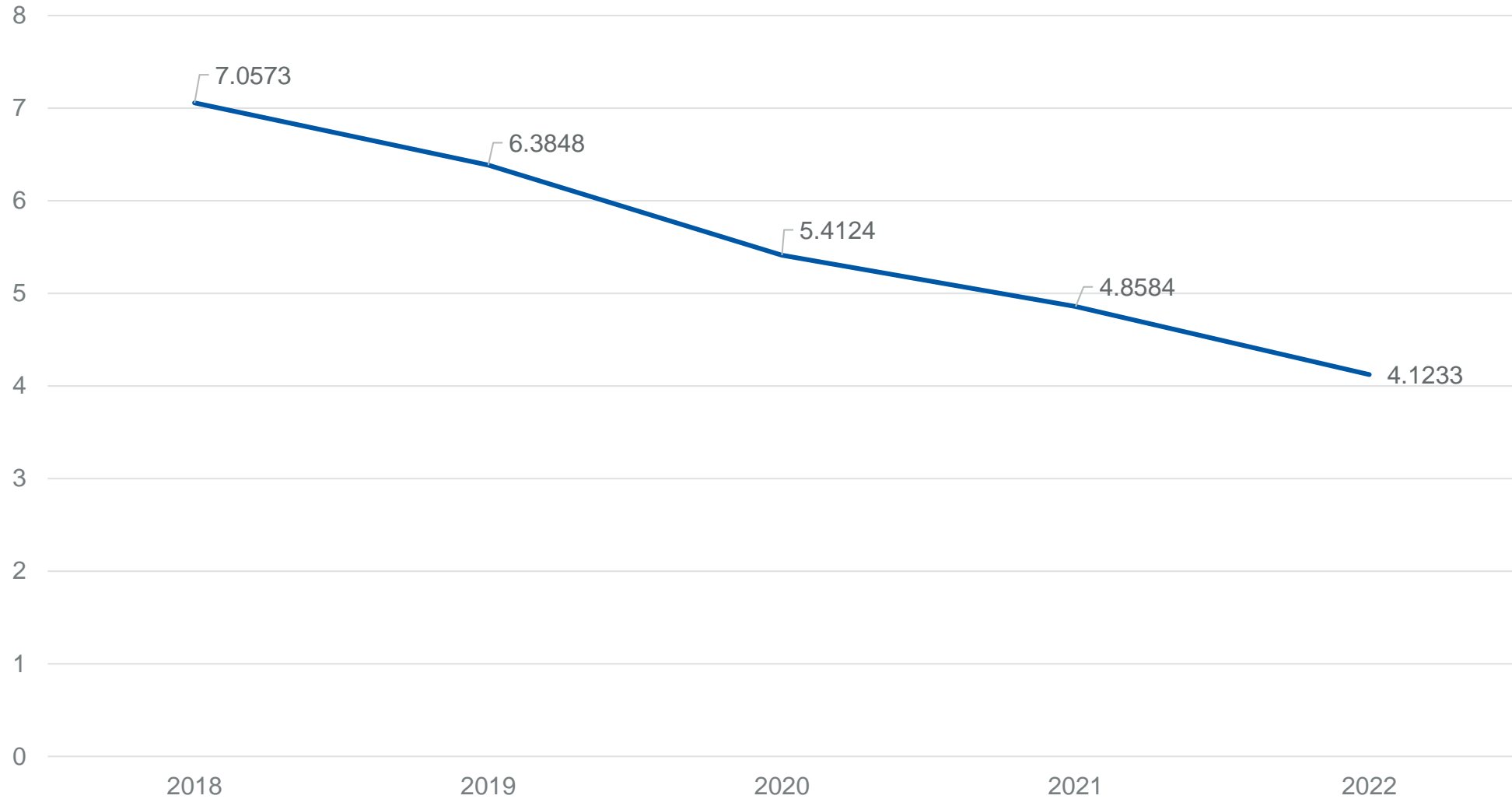
04

Youth Intermediate Levels of Care: PMPPM/Total Spend

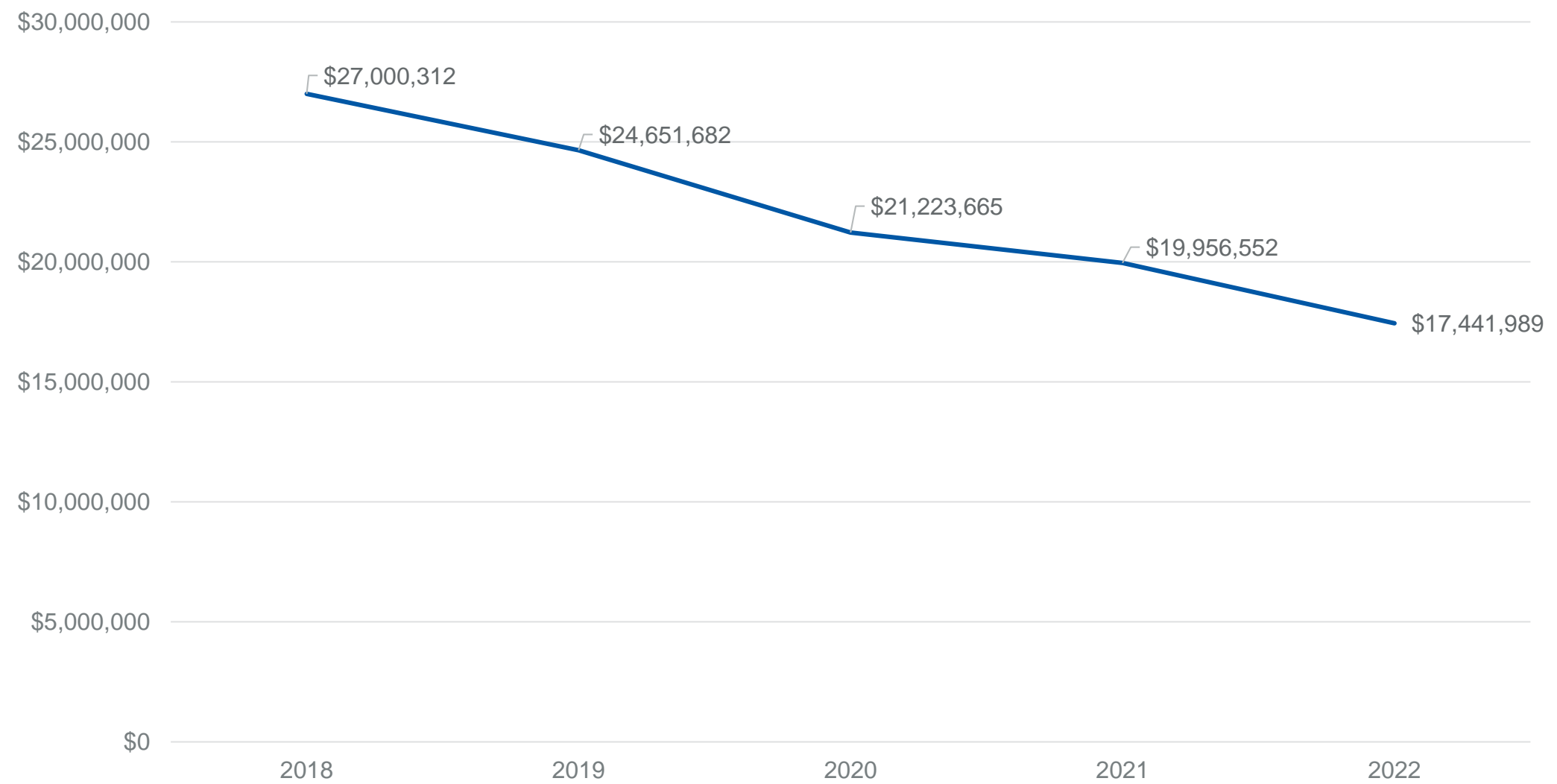
Including:

- Intensive In-Home Services
- IOP
- PHP, EDT

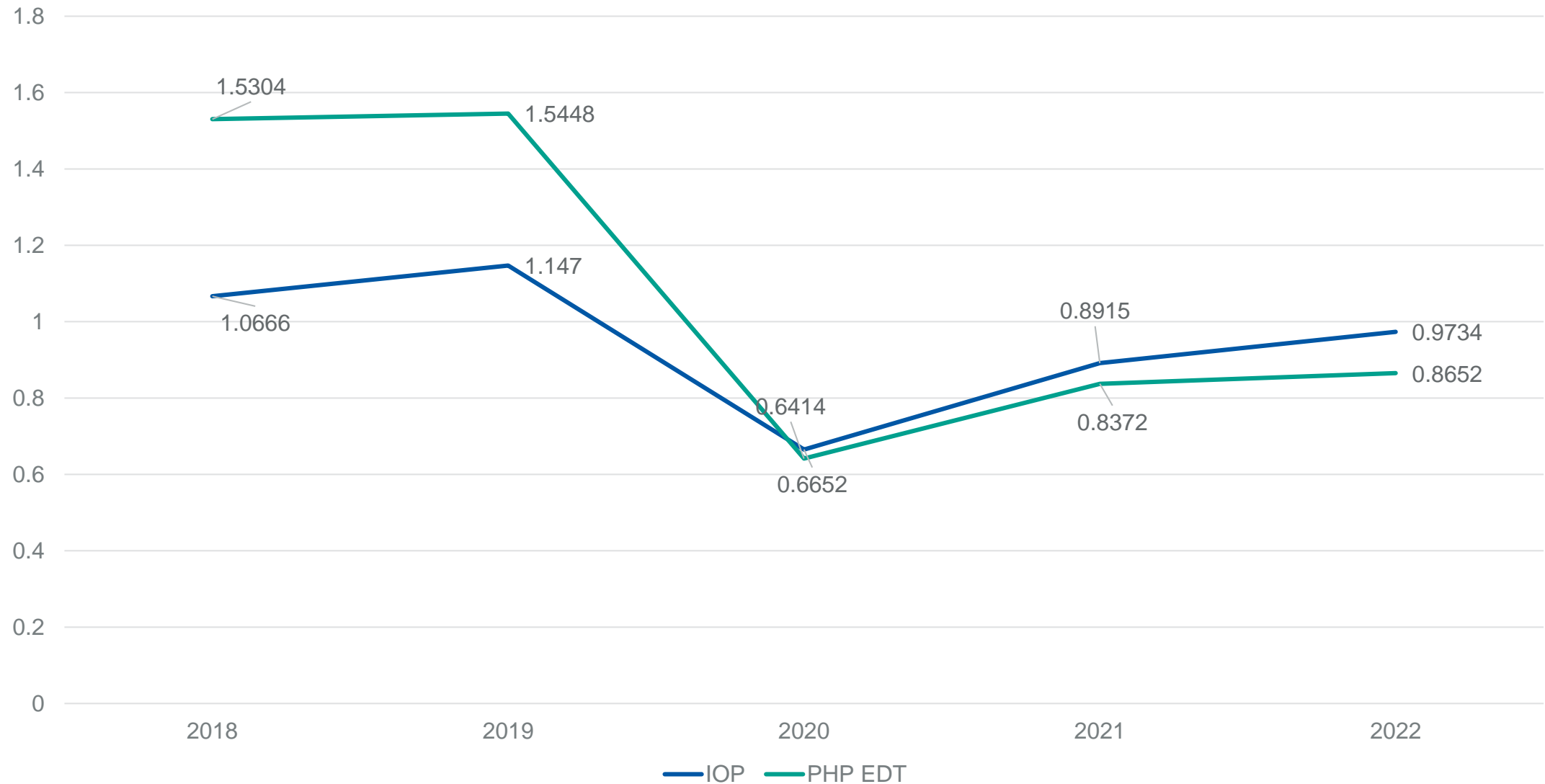
PMPM (\$) – Youth Intensive In-Home Services 2018 to 2022



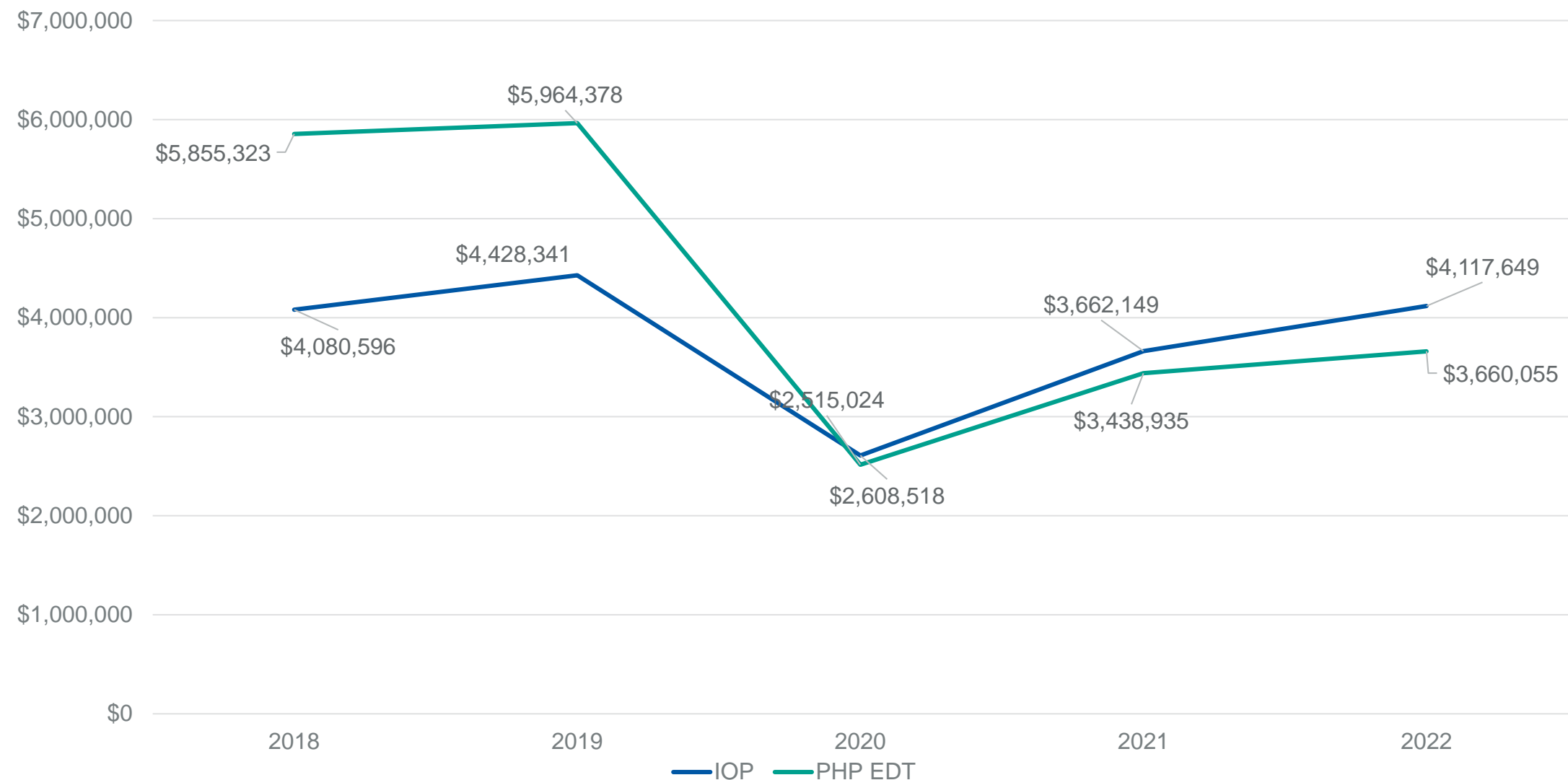
Total Paid – Youth Intensive In-Home Services 2018 to 2022



PMPM (\$) – Youth “Intermediate” Levels of Care 2018 to 2022



Total Paid – Youth “Intermediate” Levels of Care 2018 to 2022



Chapter

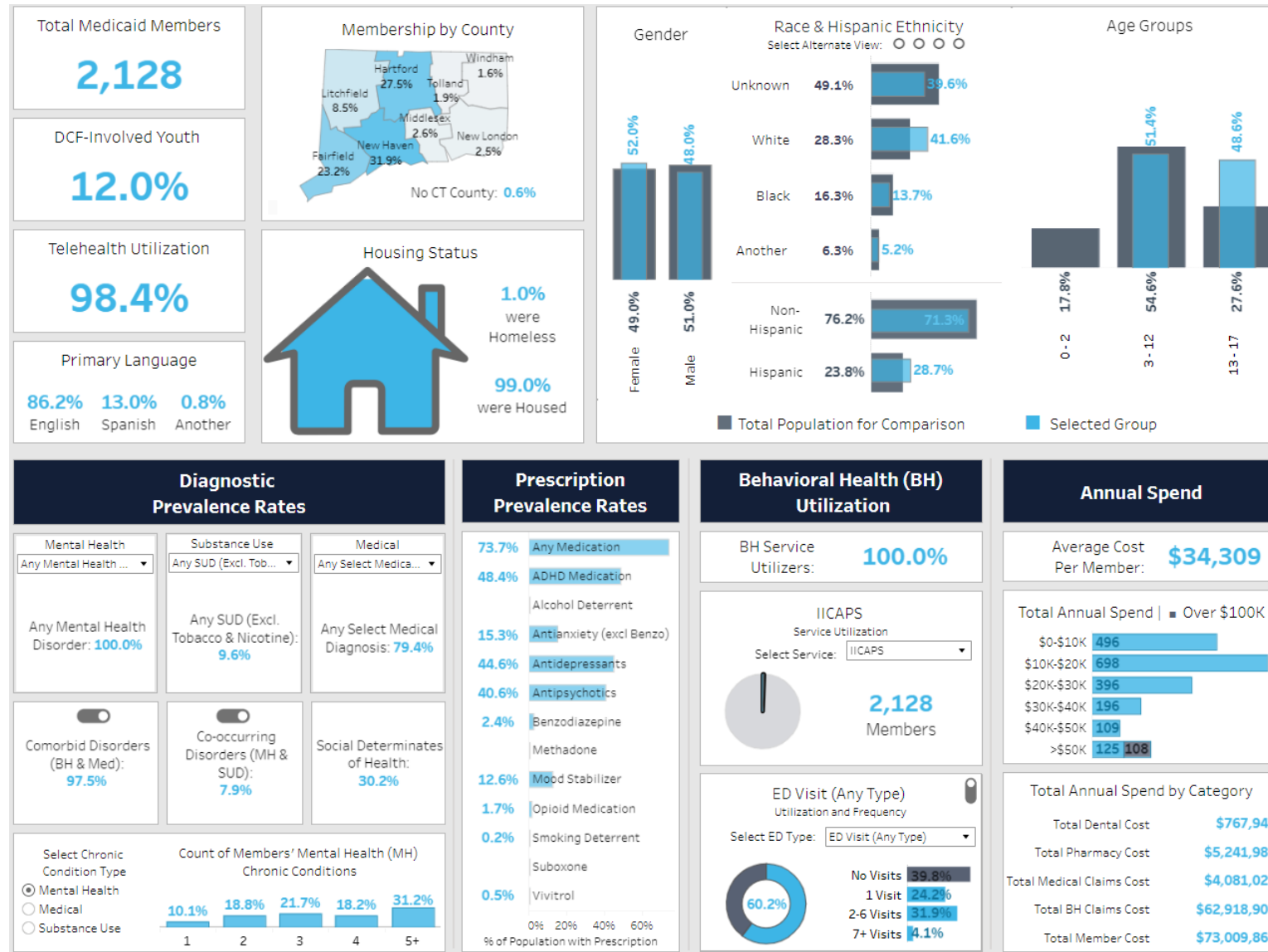
05

Youth Intermediate Level of Care Utilization

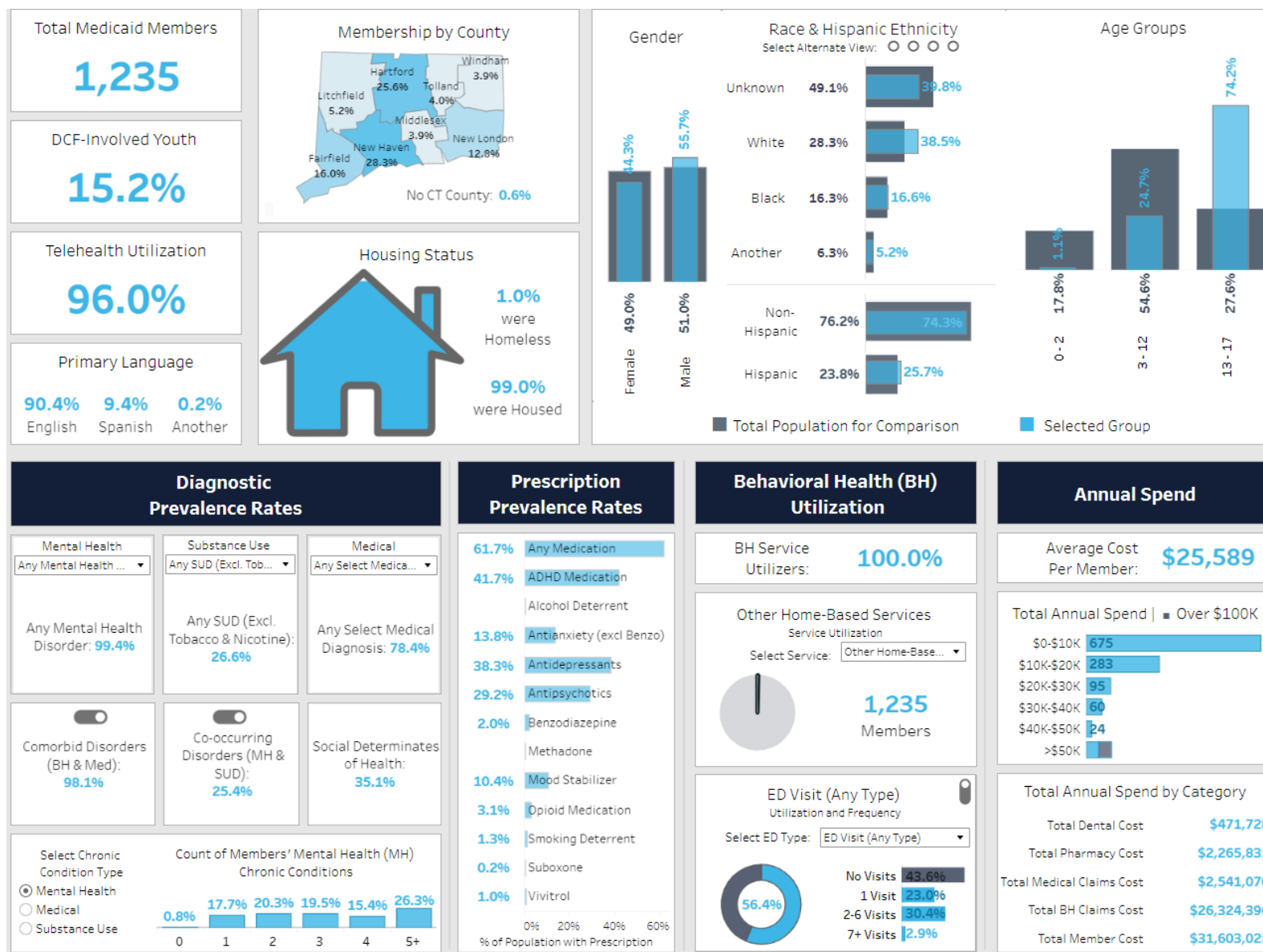
Including:

- Intensive In-Home Services
- IOP
- PHP, EDT

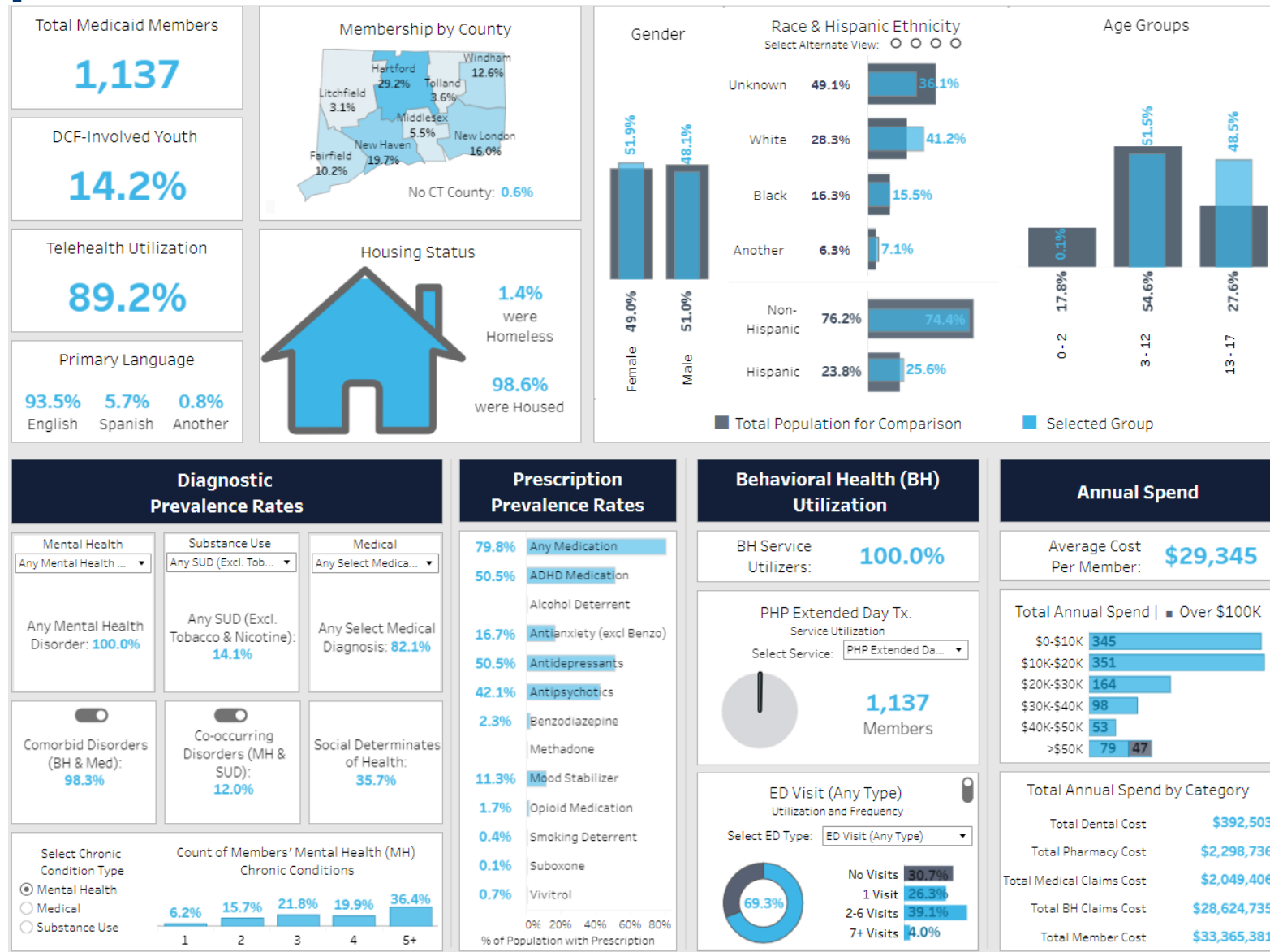
Population Profile 2021 – Youth IICAPS Utilizers



Population Profile 2021 – Youth Other Home-Based Services Utilizers



Population Profile 2021 – Youth PHP, EDT Utilizers



Diagnostic Prevalence Rates

Mental Health

Any Mental Health ...

Any Mental Health Disorder: **100.0%**

Substance Use

Any SUD (Excl. Tob...)

Any SUD (Excl. Tobacco & Nicotine): **14.1%**

Medical

Any Select Medica...

Any Select Medical Diagnosis: **82.1%**

Comorbid Disorders (BH & Med): **98.3%**

Co-occurring Disorders (MH & SUD): **12.0%**

Social Determinates of Health: **35.7%**

Select Chronic Condition Type

☒ Mental Health ☐ Medical ☐ Substance Use

Count of Members' Mental Health (MH) Chronic Conditions

Prescription Prevalence Rates

Behavioral Health (BH) Utilization

BH Service Utilizers: **100.0%**

PHP Extended Day Tx. Service Utilization

Select Service: PHP Extended Da...

ED Visit (Any Type) Utilization and Frequency

Select ED Type: ED Visit (Any Type)

Annual Spend

Average Cost Per Member: **\$29,345**

Total Annual Spend | Over \$100K

Total Annual Spend by Category

Total Dental Cost: **\$392,503**

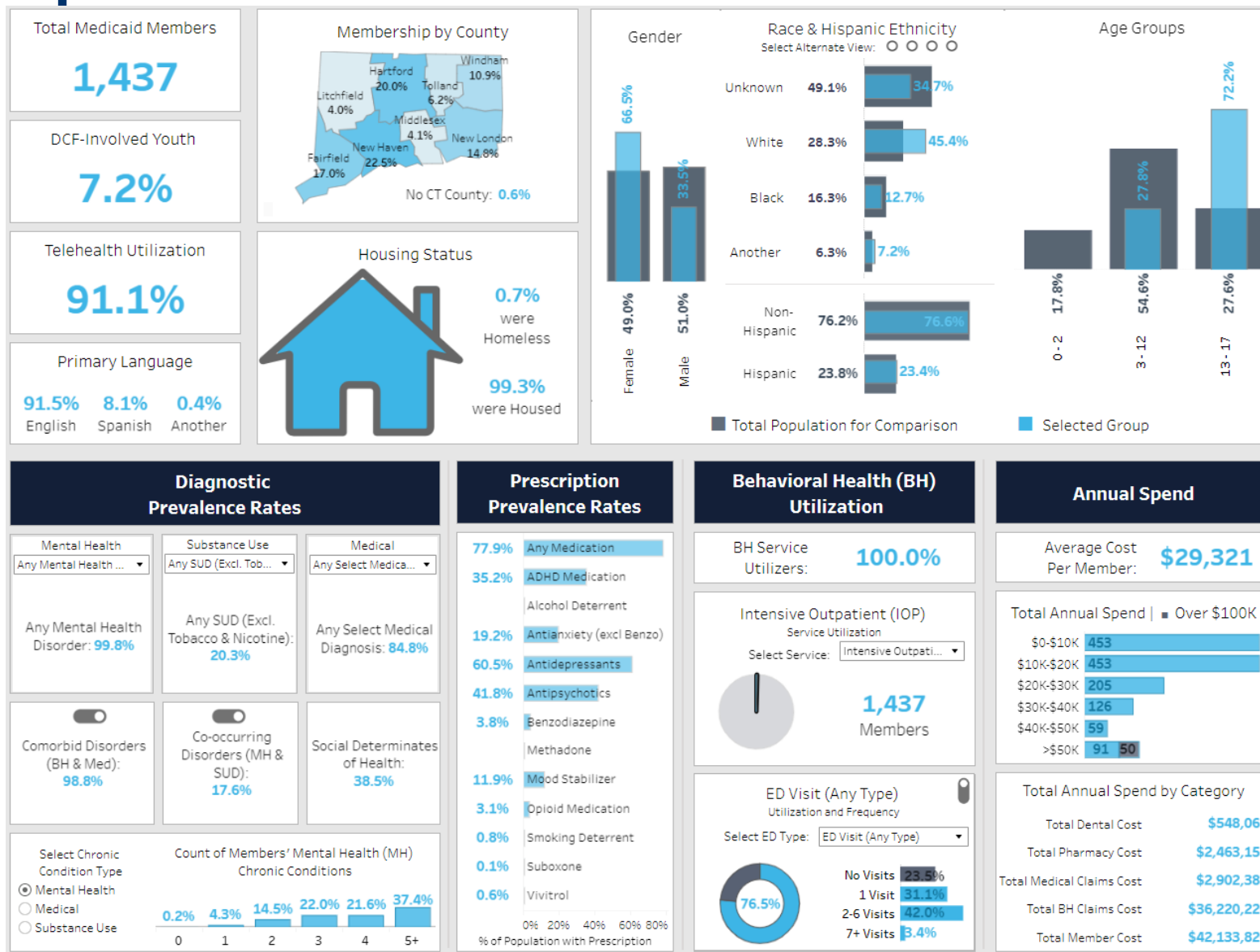
Total Pharmacy Cost: **\$2,298,736**

Total Medical Claims Cost: **\$2,049,406**

Total BH Claims Cost: **\$28,624,735**

Total Member Cost: **\$33,365,381**

Population Profile 2021 – Youth IOP Utilizers



Thank You

Contact Us

 877-552-8247

 www.ctbhp.com

 CTBHP@carelonbehavioralhealth.com